

Souvenir Folder of
COLUMBUS AND
FORT BENNING
Georgia

POSTAGE

1 ½ ¢

WITHOUT

MESSAGE

*Chattahoochee River
by Moonlight*

COPYRIGHT MCMXLI BY CURT TEICH & CO., INC., CHICAGO, U.S.A.

Greetings from

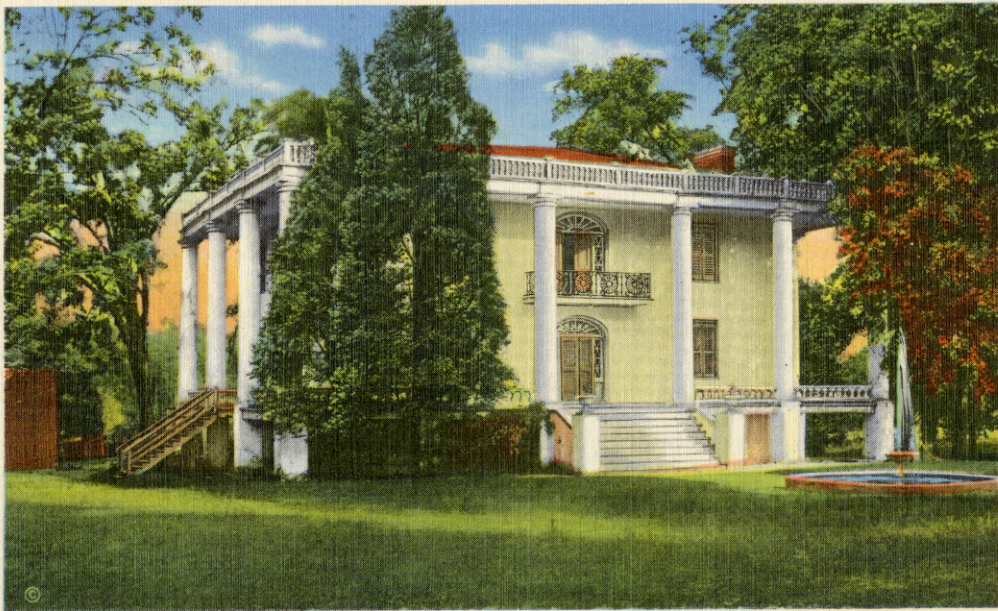
COLUMBUS AND FORT BENNING, GEORGIA

Ralston Hotel, Columbus

Ralston Hotel, Columbus



"St. Elmo," Columbus



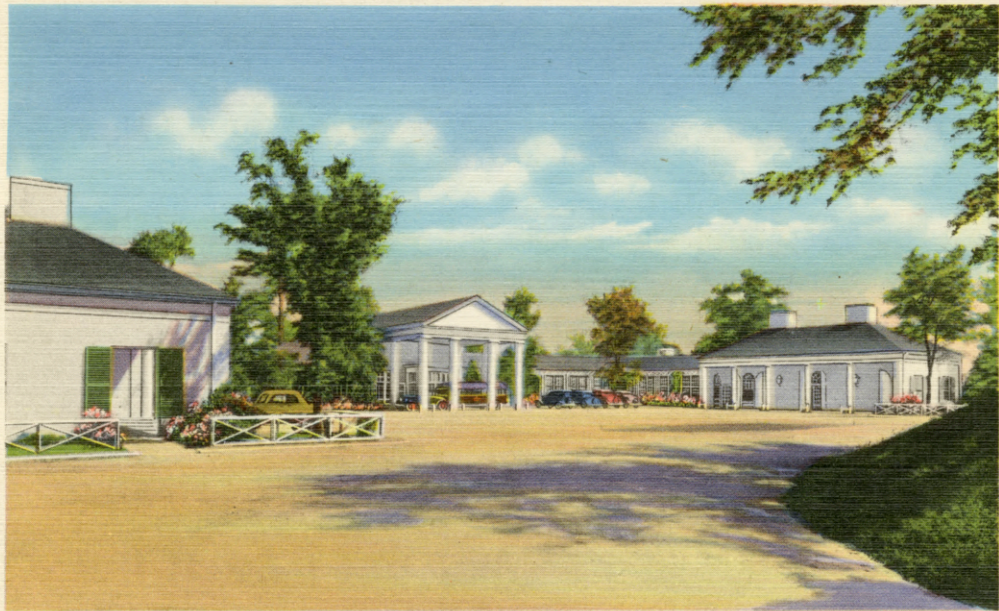
©
COPYRIGHT 1914 BY J. L. WHITE

Columbus has an efficient Chamber of Commerce with full time staff of experts available to all inquirers.

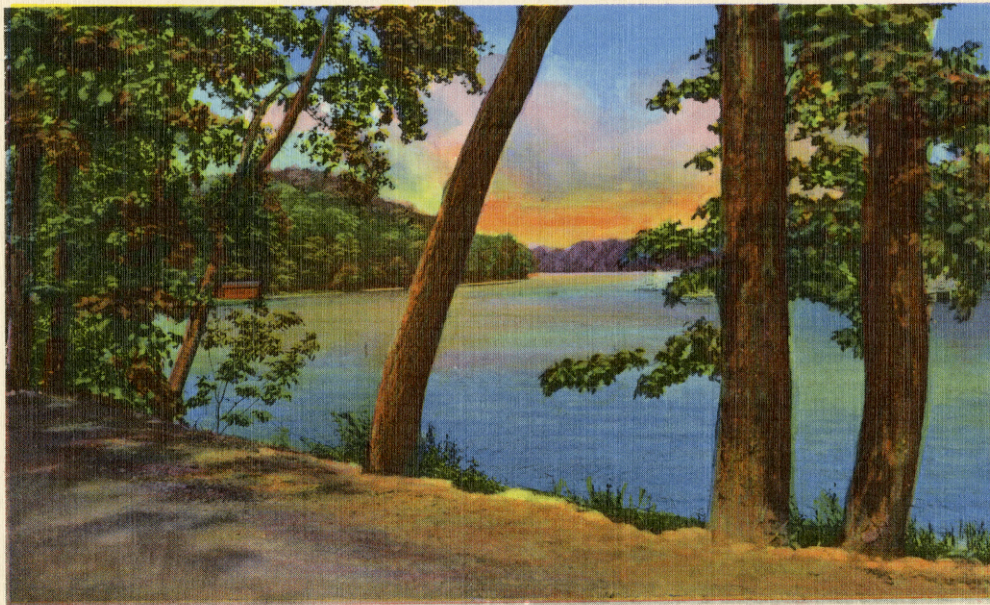
THE WHITE COMPANY, COLUMBUS, GA.
GENUINE CURTEICH-CHICAGO "C. T. ART-COLORTONE" CREATION (REG. U. S. PAT. OFF.)

D-6543

Georgia Hall, Warm Springs Foundation, near Columbus



SCENE ON THE BEAUTIFUL CHATTAHOOCHEE RIVER



Columbus has an efficient Chamber of Commerce with full time staff of experts available to all inquirers.

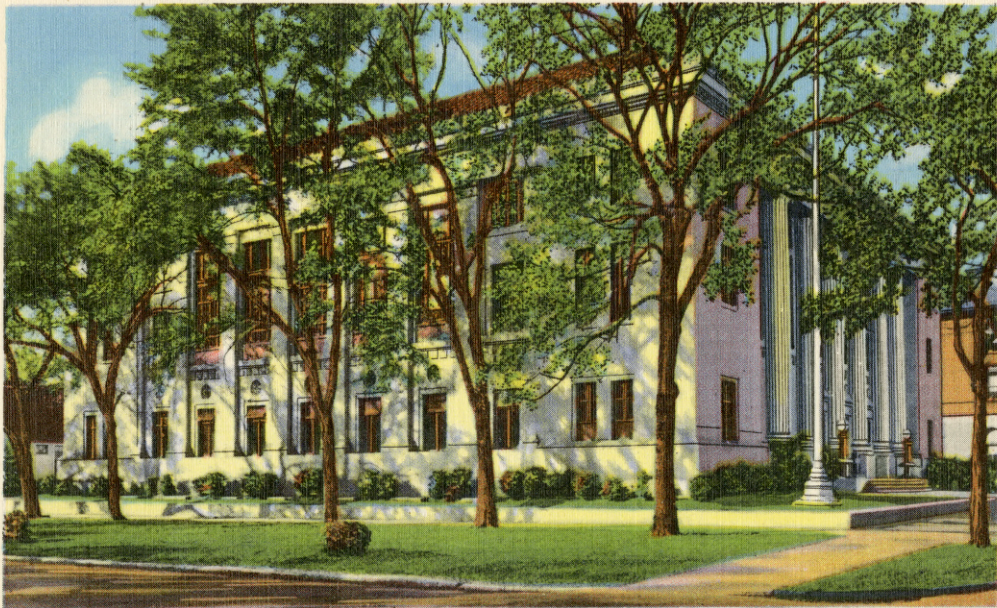
THE WHITE COMPANY, COLUMBUS, GA.

GENUINE CURTEICH-CHICAGO "C. T. ART-COLORTONE" CREATION (REG. U. S. PAT. OFF.)

D-6543

Jordan Vocational High School, Columbus





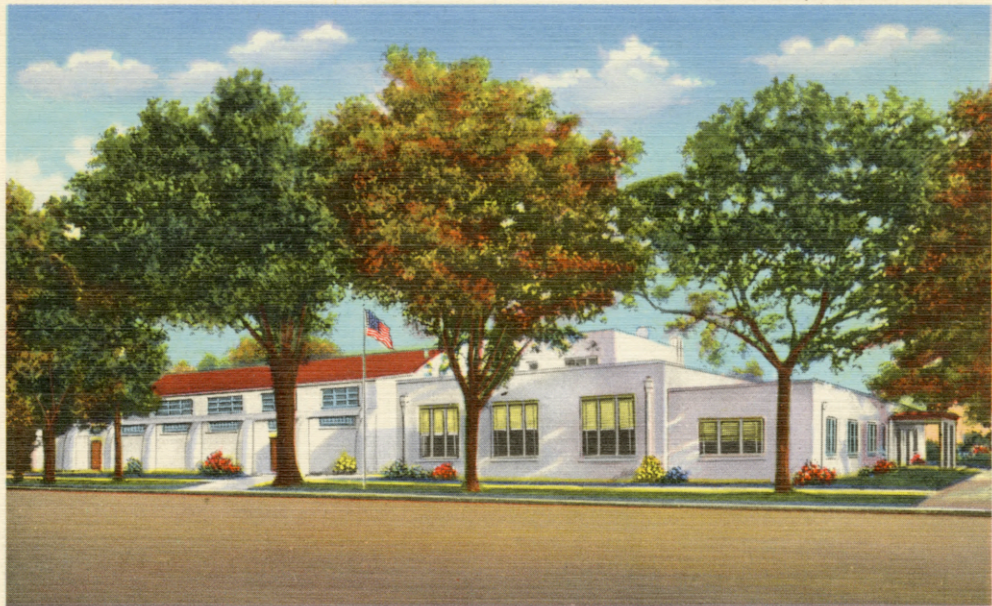
Columbus has an efficient Chamber of Commerce with full time staff of experts available to all inquirers.

THE WHITE COMPANY, COLUMBUS, GA.

GENUINE CURTEICH-CHICAGO "C. T. ART-COLORTONE" CREATION (REG. U. S. PAT. OFF.)

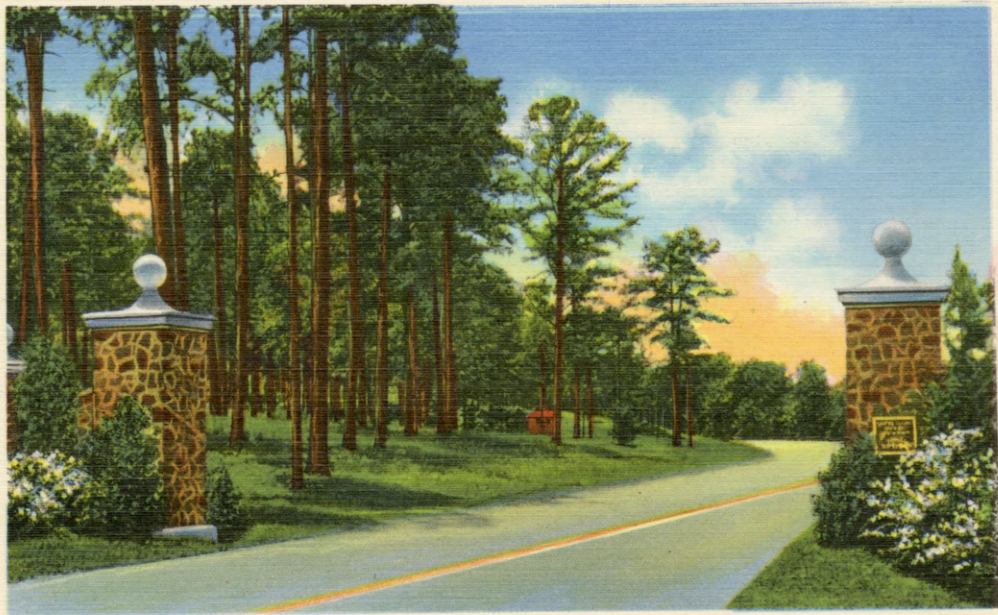
D-6543

U. S. O. Club, Columbus



Entrance to the U.S.O. Club, Columbus, Ohio

Entrance to the Infantry School, Ft. Benning



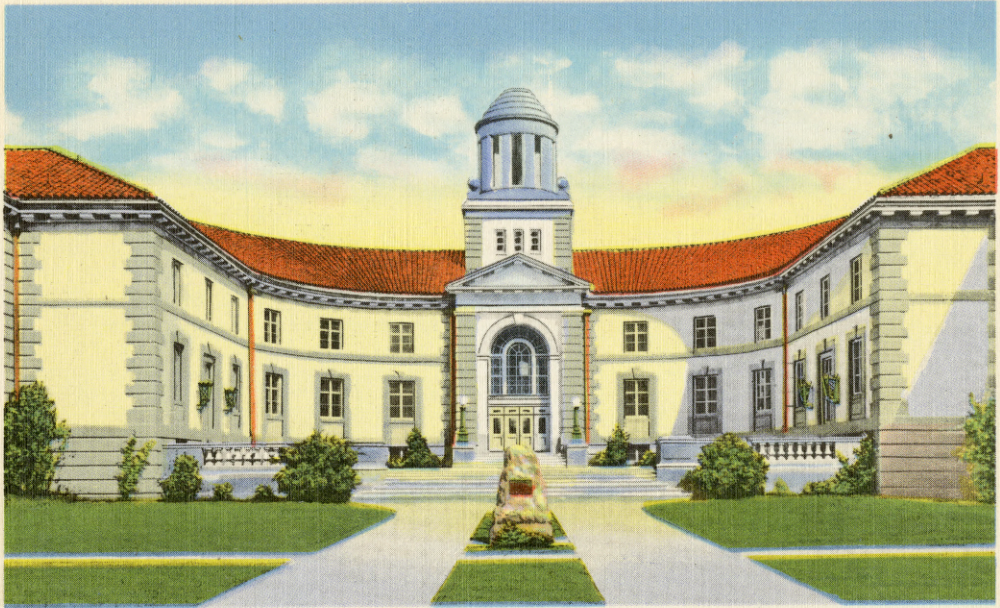
Columbus has an efficient Chamber of Commerce with full time staff of experts available to all inquirers.

THE WHITE COMPANY, COLUMBUS, GA.

GENUINE CURTEICH-CHICAGO "C. T. ART-COLORTONE" CREATION (REG. U. S. PAT. OFF.)

D-6543

Infantry School Building, Ft. Benning



It is a healthy city surrounded by rolling country, with large water storage

Columbus, Georgia

COLUMBUS is the South's oldest Industrial city and ranks second in Georgia in value of manufactured products, in the number of employees engaged in manufactures and total wages paid these employees.

Columbus has not had a bank failure, nor a major industrial failure in over 40 years. Columbus is the geographical center of a section embracing four counties in which the population is above 175,000. U. S. Census gives the City a population of 53,104.

Abundant power for manufacture is furnished by the Chattahoochee River, which here has a fall of 120 feet in three miles, developing over 100,000 horse power. The cotton industry is paramount in Columbus.

It is a healthy city surrounded by rolling country, with large water storage reservoirs above it.

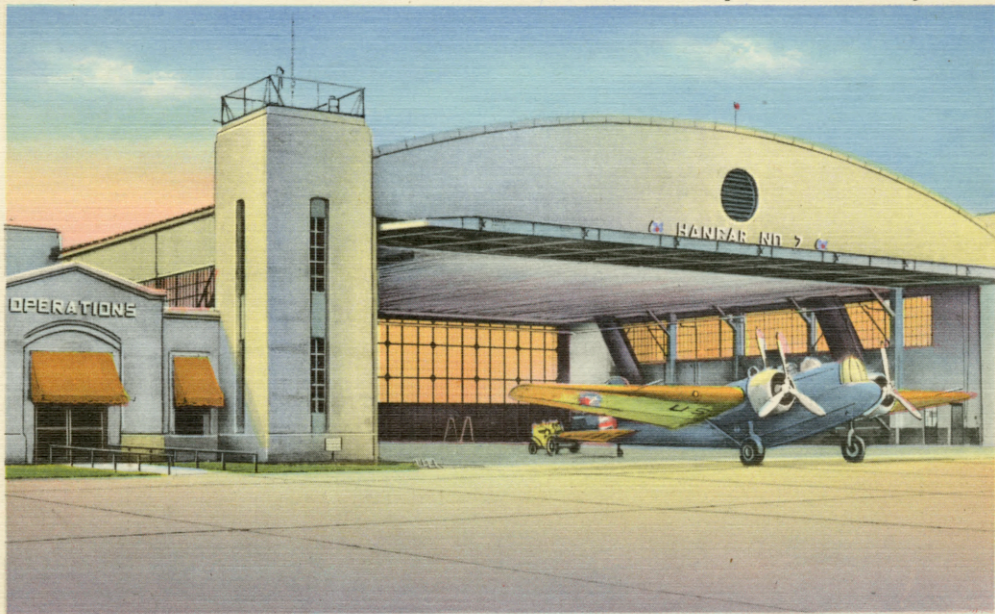
There are splendid school facilities, a public school system that is a model, 48 white and 41 colored churches scattered over the city. Ample amusements, theatres open on Sunday, a privately owned and municipal golf course, municipal swimming pool, city league baseball. City owns large municipal stadium where football games and major athletic events are held.

In pioneer days, officials of the city government not only sought the development of railroads when this form of transportation was in its infancy, but actually issued bonds and built railroads into Columbus. For the first 70 years of the city's corporate life, the only bonds issued by the municipality were for the purpose of building railroads into Columbus. Columbus is now served by Central of Georgia, Southern, and Seaboard Railway, Bus Lines, and Barge Line on the Chattahoochee River. City also issued bonds to help build its gas plant. Now has natural gas piped from Louisiana. Columbus has the Commission-Manager form of government. Its success is shown on every hand in municipal improvement, in paving, lighting and sewerage.

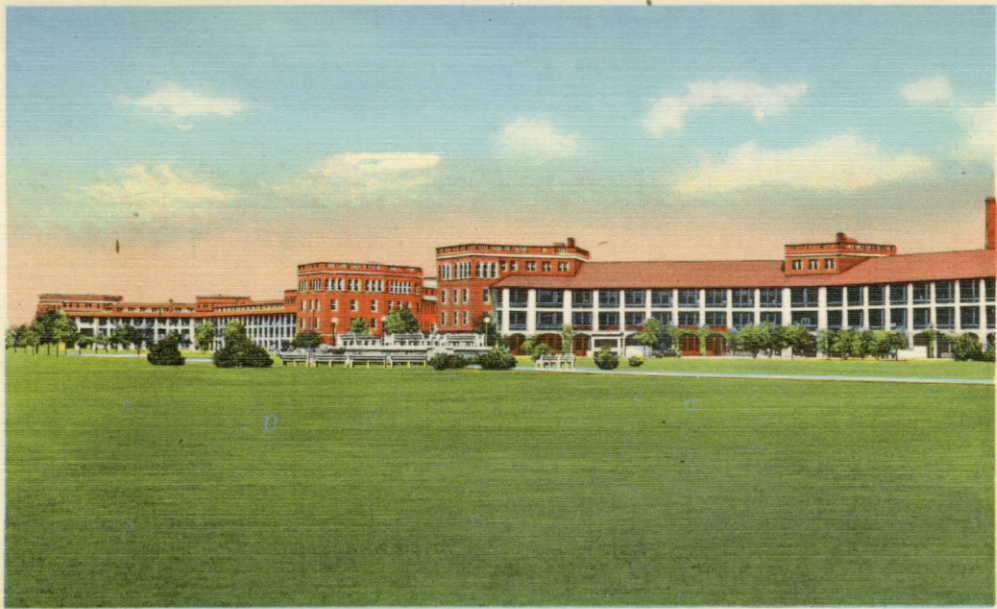
Largest and most interesting military institution in America is located at Fort Benning, nine miles South of Columbus, and is accessible by automobile or motor bus over improved highway.

Columbus has an efficient Chamber of Commerce with full time staff of experts available to all inquirers.

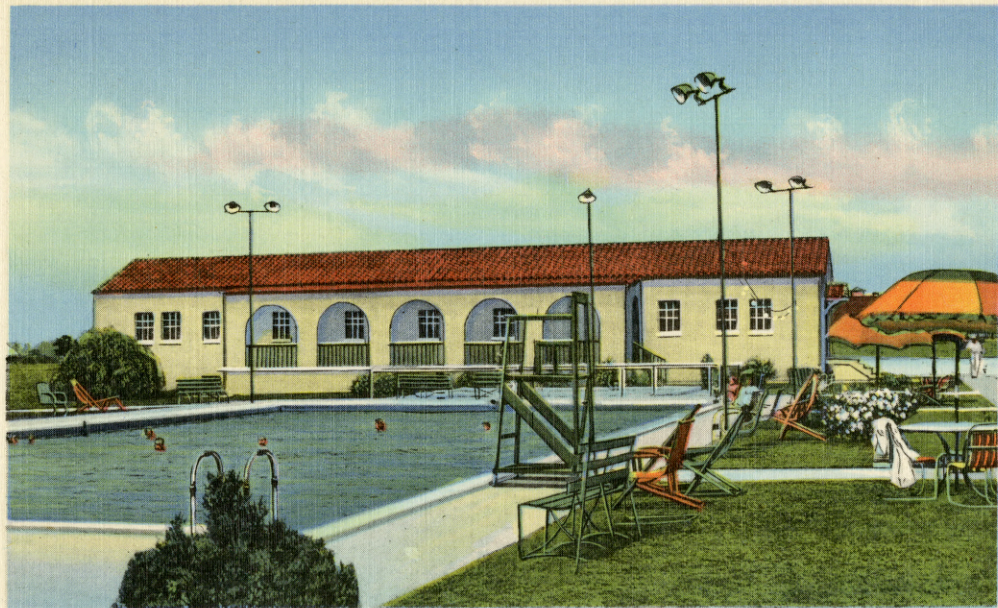
Partial View of Lawson Field, the Infantry School, Ft. Benning



Barracks, Ft. Benning



Officers' Club Swimming Pool, the Infantry School, Ft. Benning



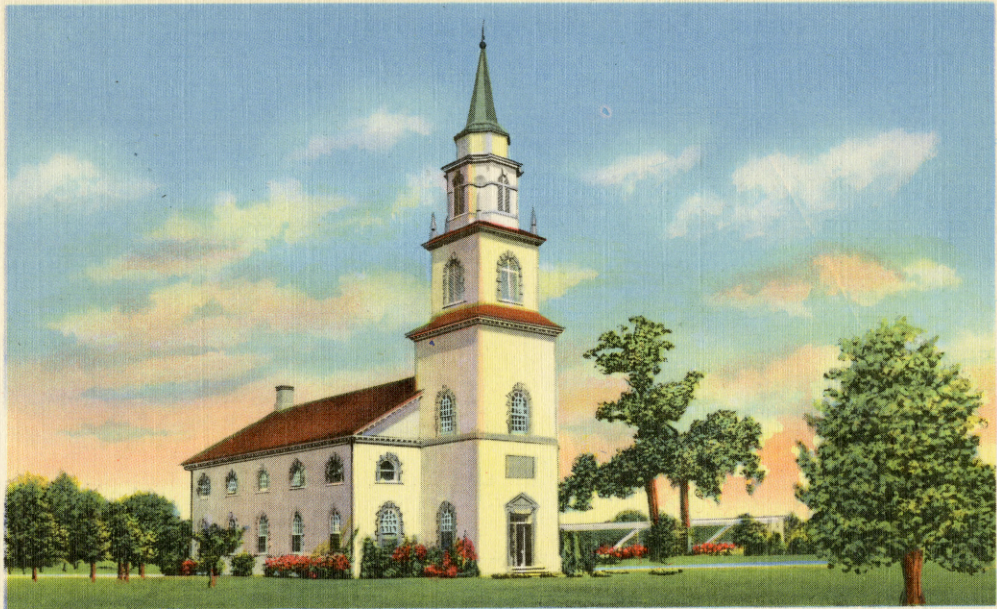
Commandant's Quarters, the Infantry School, Ft. Benning



Officers' Club, the Infantry School, Ft. Benning



The Chapel, the Infantry School, Ft. Benning



Russ Pool, the Infantry School, Ft. Benning



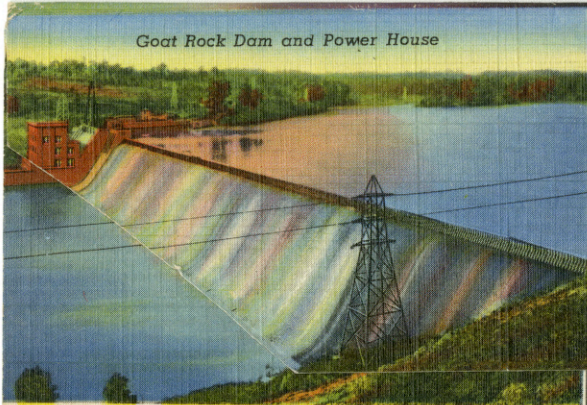
Tank Attack, the Infantry School, Ft. Benning



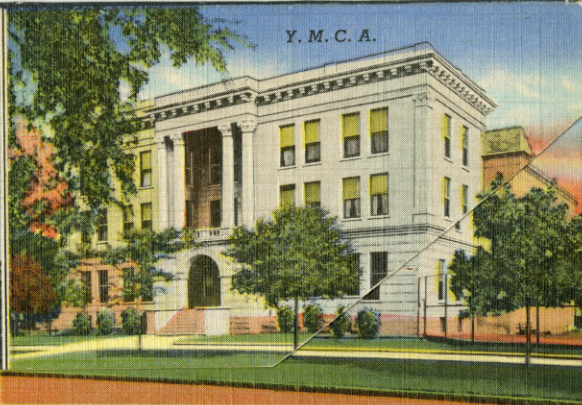
Old Glory, Ft. Benning



Goat Rock Dam and Power House



Y. M. C. A.



Court House,
Fountain and Square



First Baptist Church and
Sunday School Room

